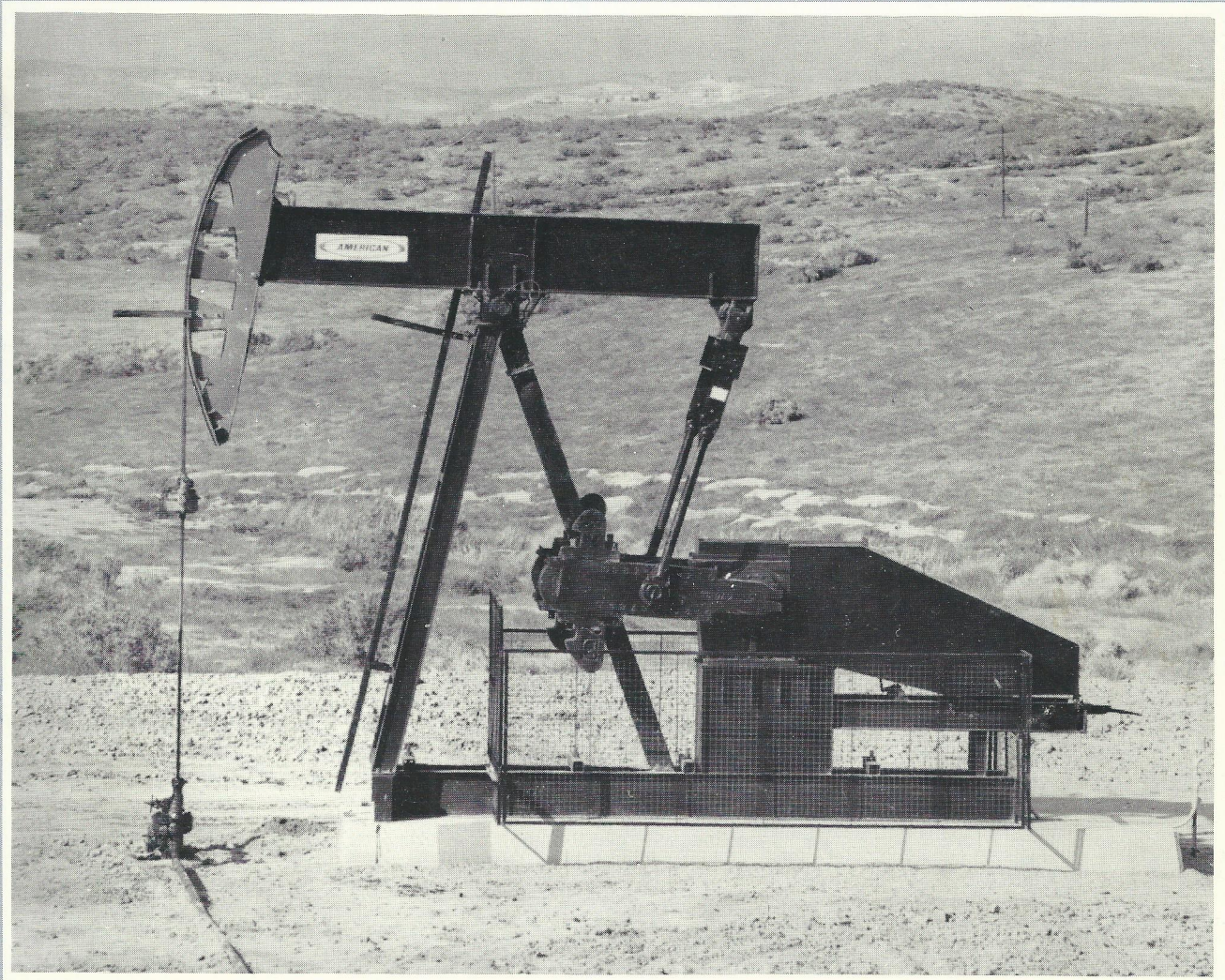
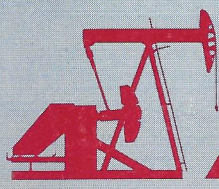


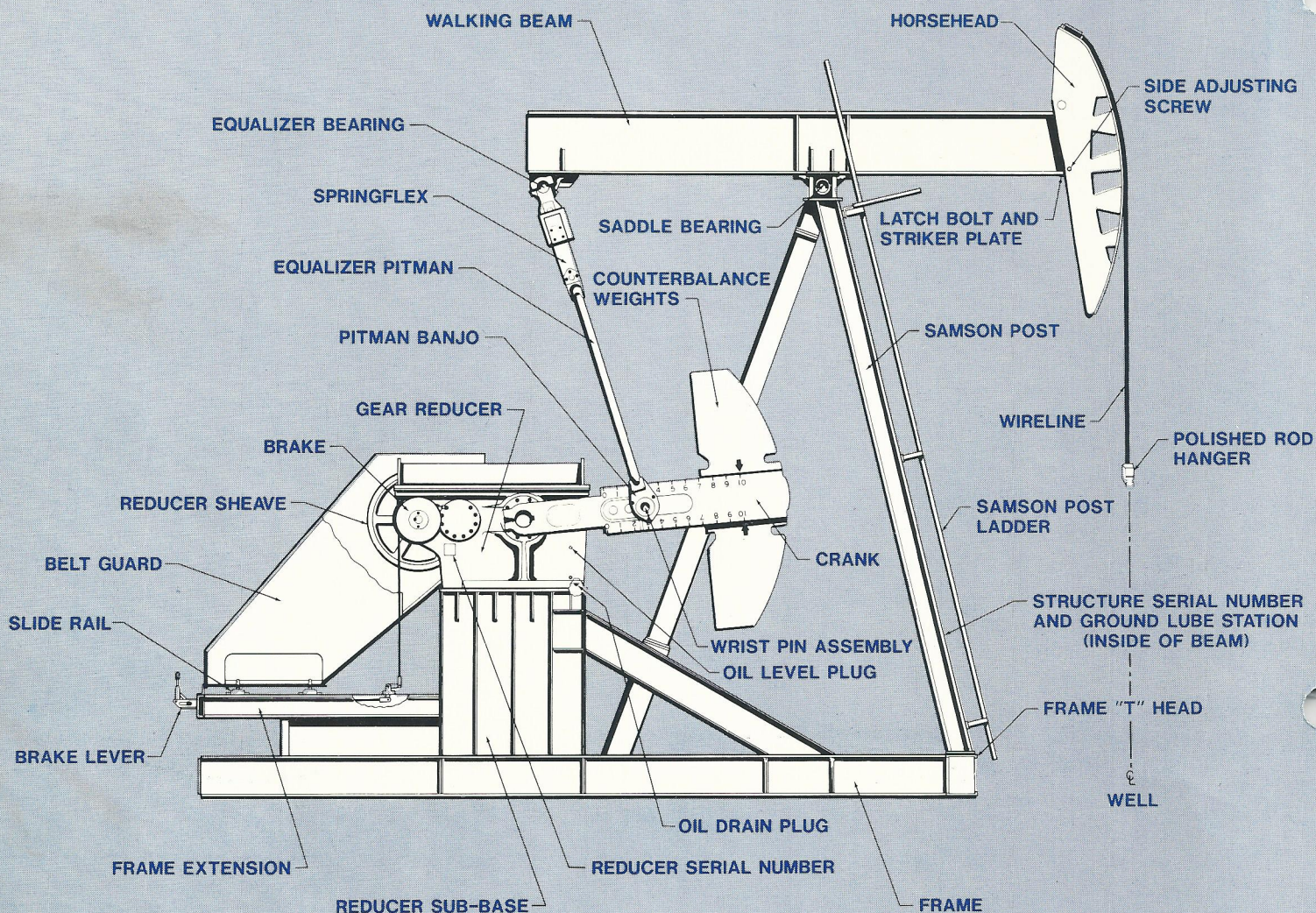


General Catalog  
1986



**American Pumping Units . . .  
Reliable & Quality Proven Worldwide**

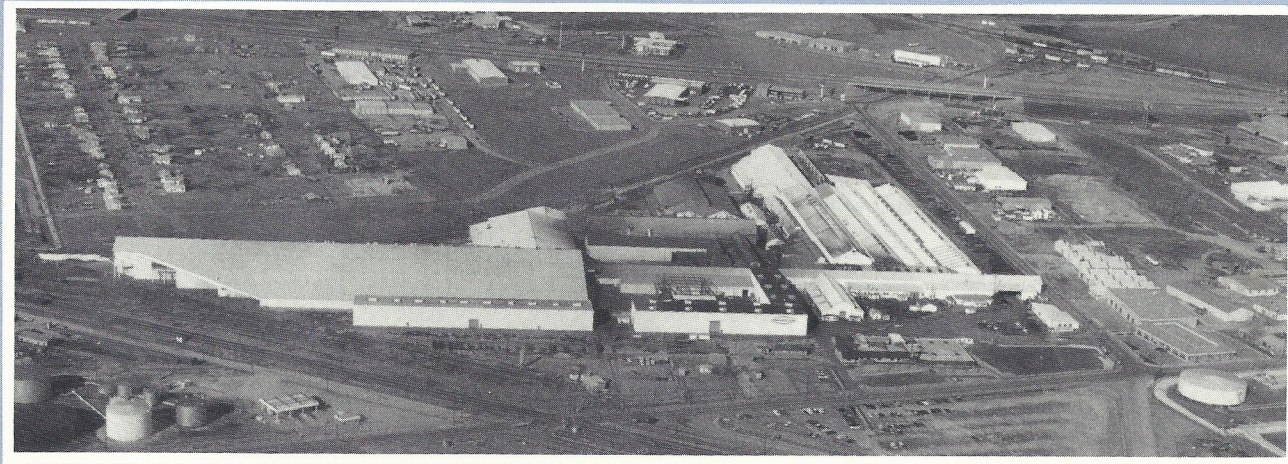
 **AIMCO** American International  
Manufacturing Corporation



The design of the American pumping unit has proven itself over the years to be one of the most reliable and trouble-free units available to the energy industry. The versatility of the American unit is unmatched, capable of handling over 90 percent of all artificial lift applications that exist today.

American's high geometric efficiency and low torque factors are the result of long working centers and tall samson posts. Samson posts are of the three leg tripod variety, providing maximum stability for the unit. American offers over 850 different model configurations on API reducer sizes D25 through D912. Unique design requirements are no problem for American's engineering staff, who routinely address customer requests for special applications.

**RELIABILITY, QUALITY AND VERSATILITY . . . WHAT CUSTOMERS HAVE COME TO EXPECT FROM AMERICAN SINCE 1924**



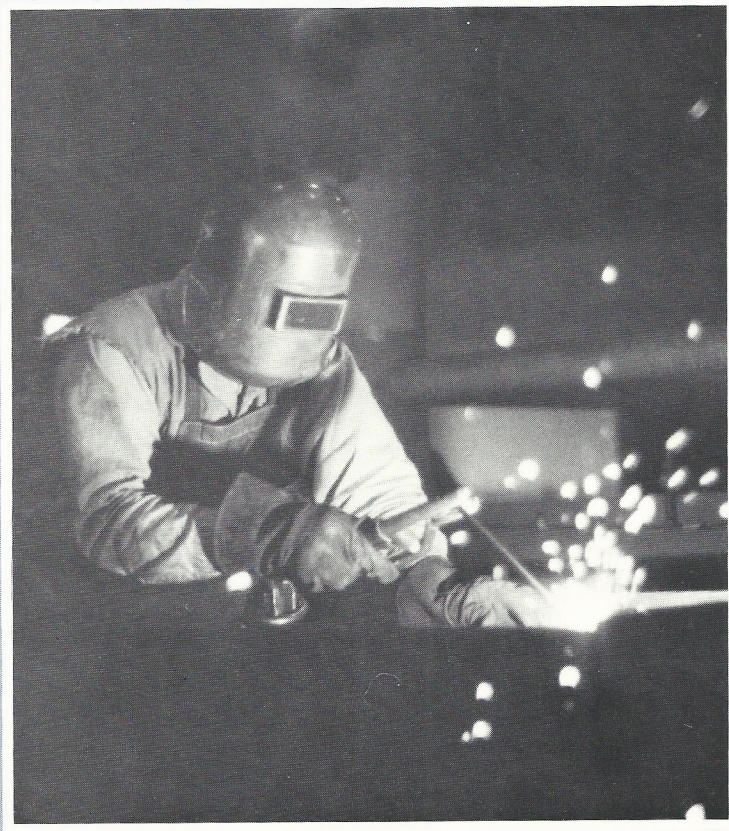
Since American introduced its first oil well equipment over 60 years ago, the company has continued its quest to produce the most reliable and quality proven pumping units available to the energy industry. Industry needs have changed over the years and American has always responded by developing the technology required to meet those needs.

Located in Fort Worth, Texas, American's manufacturing facility is second to none. The plant stands on 85 acres of land served by four railroads. Facilities include: modern gray iron and ductile iron foundry, structural fabrication shop, welding shop, tool machine and grinding shops, production machine shop, herringbone gear shop, forge shop, tubular shop, assembly shop, production heat treating, shot blasting equipment, chemical laboratory, quality assurance and gage laboratory.

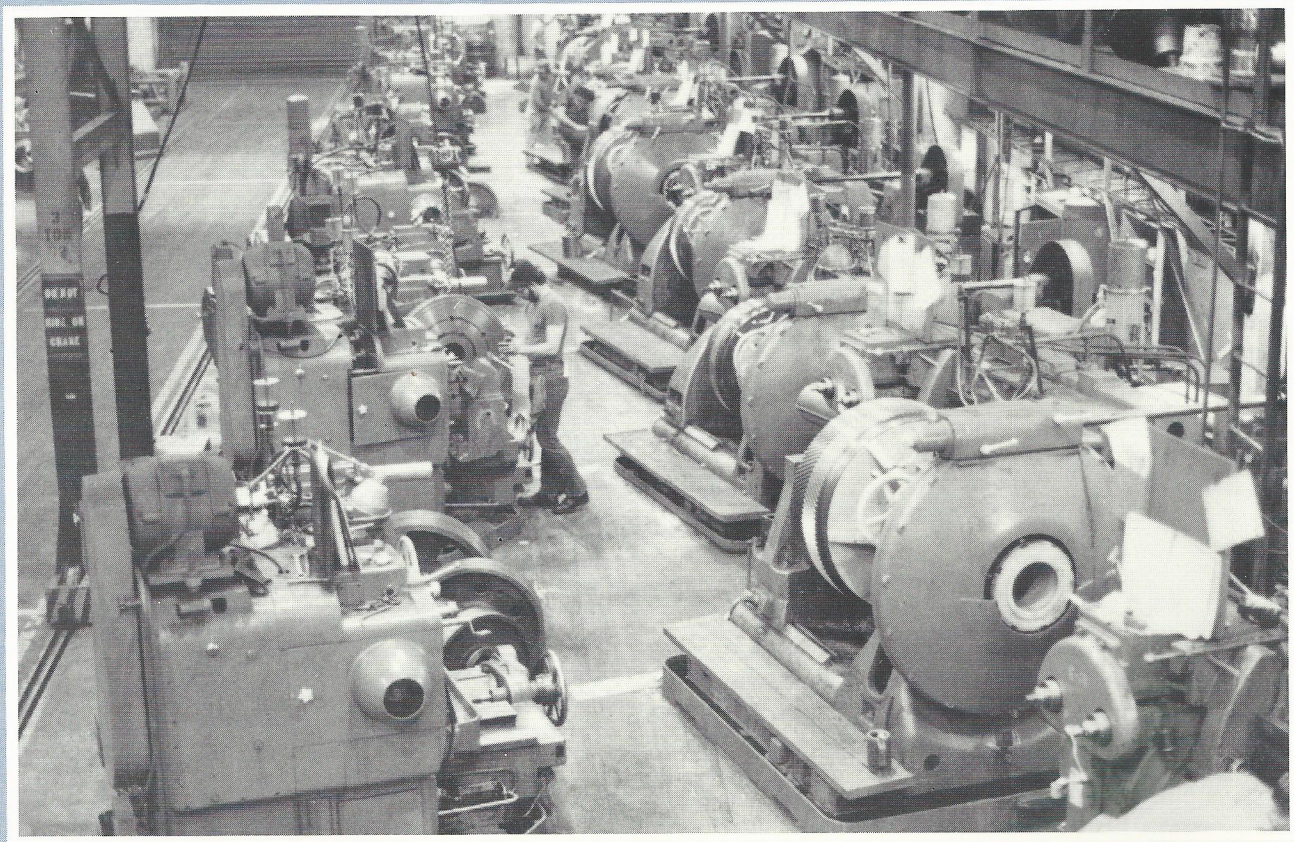
Customers that select American products also get the support of an experienced and professional sales and service staff that is proud to stand behind their product. American made pumping units will provide its customers with years of trouble-free performance. American quality and reliability translate into less downtime and more production . . . the bottom line achievement that has become an American tradition.

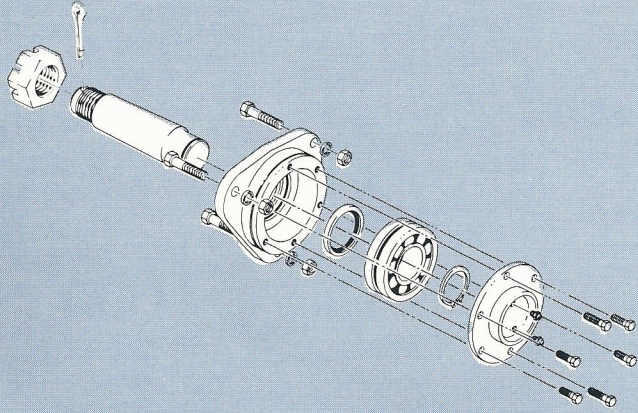
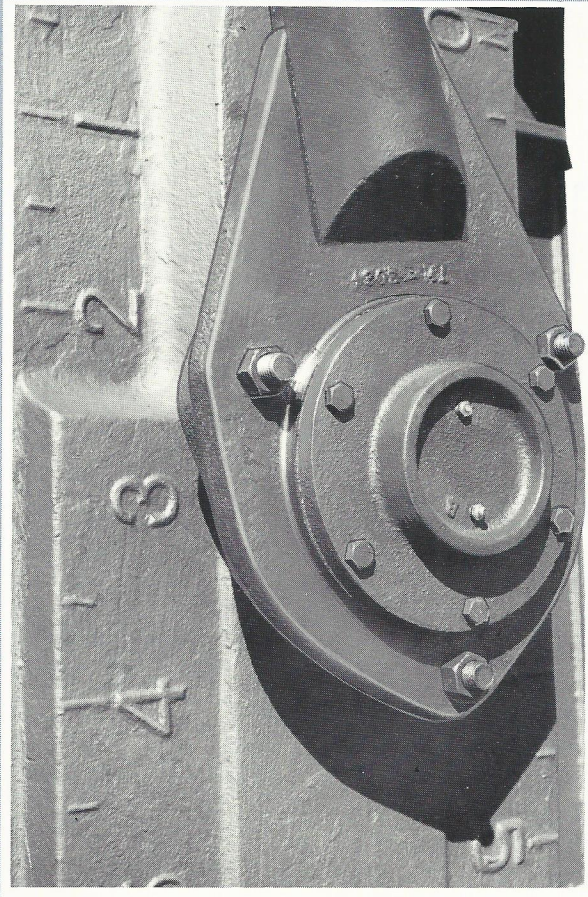


Over 60 years of experience and modern manufacturing facilities produce the best pumping units available. From foundry through final assembly, American builds with pride and continues generating quality that satisfies the final inspectors—our customers.

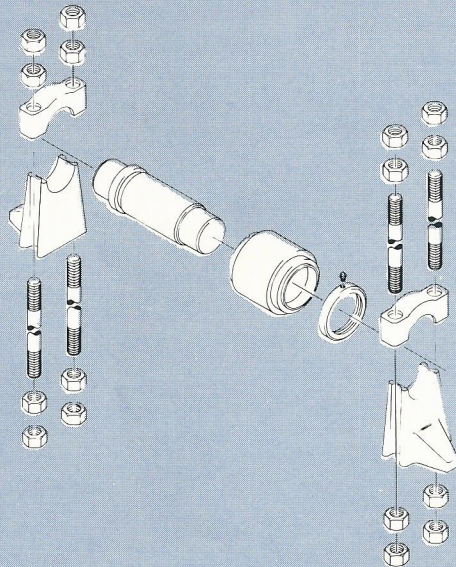
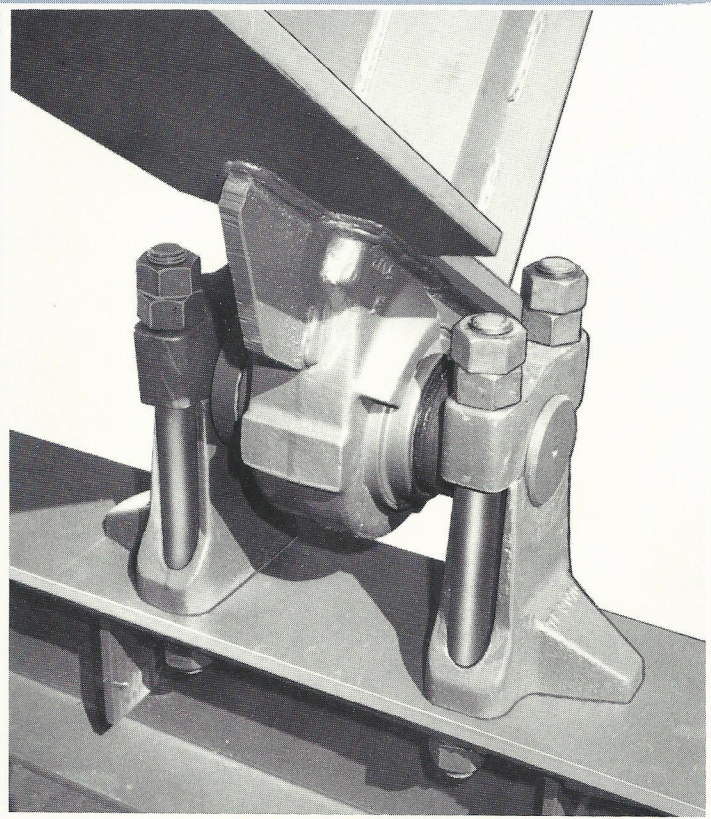


All components of American pumping units (except bearings) are manufactured and fabricated by American under its own roof, which encompasses nearly one million square feet of space.





Wrist pin bearings on all American pumping units are self-aligning spherical roller bearings. These bearings have a one piece outer race which eliminates field adjustment.



Saddle and equalizer bearings use tapered roller bearings on all American units with strokes of 64 inches and longer.

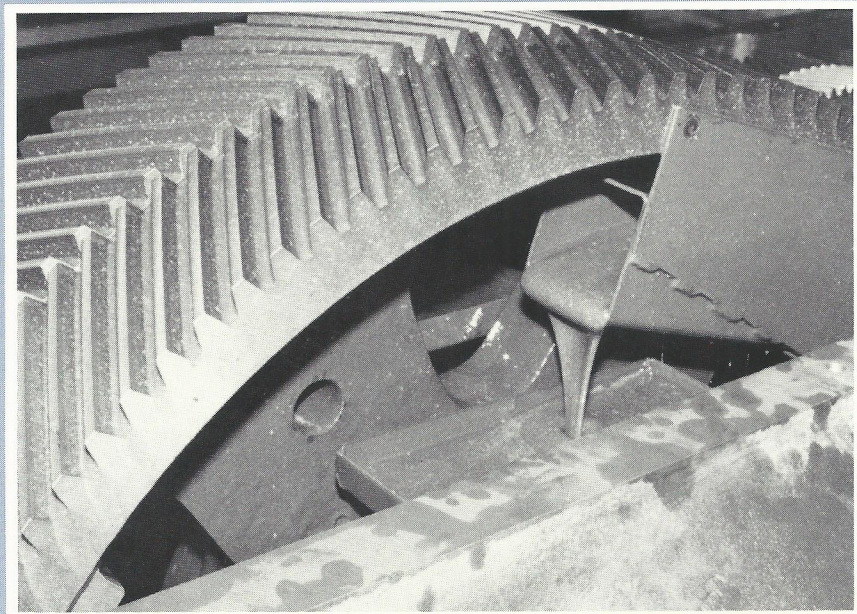
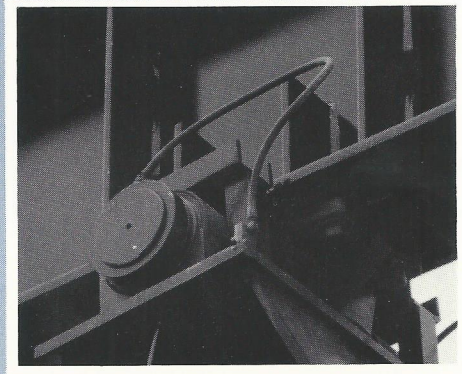
**AMERICAN**

## Conventional Geometry Working For You . . .

**Use with steel or fiberglass rods  
and power with Nema-D or ultra-  
high slip electric motors. Any  
way you want to pump a well  
Conventional Geometry will  
work for you.**



For over 60 years your experience has proven that herringbone gears are superior in conventional pumping unit applications. At American, your experience counts. We have 40 herringbone gear generators and many other machine tools for producing gear reducers (D16-D912). In fact, all gearbox components except the bearings are manufactured at our Fort Worth facility. We use anti-friction bearings to provide increased drive efficiency and lower power costs; all of our units have oversized roller bearings-no bronze bushings. Our positive lubrication system with oil buckets fill troughs which feed oil to all bearings, even at pumping speeds of less than one stroke per minute. The outstanding durability of our gearbox demonstrates the quality you have come to expect from American.



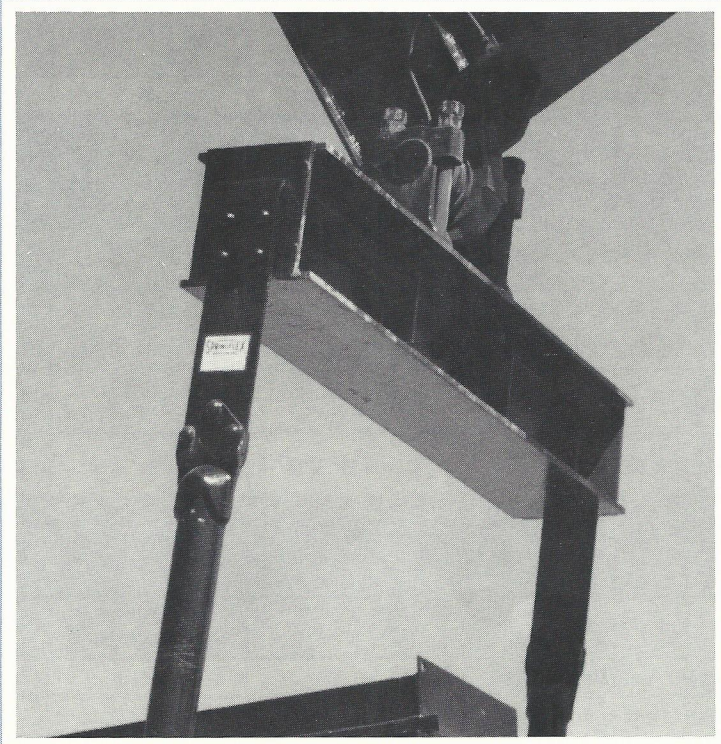


# Consistent, Dependable Quality

With the manufacture of our first unit, American made a commitment to quality. From that initial commitment came our reputation for consistent, dependable quality. That quality is evidenced by our high-capacity, double-row tapered bearings on the saddle and the equalizer and the double-row spherical roller bearings on the wrist pins. These self-aligning bearings equalize loads to give you the durability you rely upon.

Our commitment to quality craftsmanship led to the development of our Springflex Equalizer—the perfect connection. Our patented equalizer has nothing to wear out; no bearings or lubrication are required. Since 1959, American has used Springflex to provide flexibility for equalizing pitman loads and to maintain rigidity for vibration-free operation.

For minimal maintenance and optimum performance, choose American—quality proven most reliable where it is most important to you . . . in the field.





## ADJUSTABLE CRANK BALANCED PUMPING UNIT SPECIFICATIONS

UNIT DESIGNATION	912-365-168 640-365-168	912-305-168 640-305-168 456-305-168	912-365-144 640-365-144	640-305-144 456-305-144	640-256-144 456-256-144
<b>POLISHED ROD CAPACITY, LBS.</b>	36,500	30,500	36,500	30,500	25,600
<b>STROKE LENGTH, INCHES</b>	168, 143½, 120½	168, 143½, 120½	144, 123, 103¼	144, 123, 103¼	144, 123, 103¼
<b>CRANKS</b>	KB-117-53 or KLB-117-53	KB-117-53 or KLB-117-53	KB-117-53 or KLB-117-53	KB-117-55 or KLB-117-55	KB-117-53 or KLB-117-53
<b>WIRELINE X CENTERS</b>	1¼" x 40' x 16"	1¼" x 40' x 16"	1¼" x 35' x 16"	1¼" x 35' x 16"	1¼" x 35' x 16"

UNIT DESIGNATION	320-256-144	320-213-144 228-213-144	320-119-144	228-119-144 160-119-144	456-356-120
<b>POLISHED ROD CAPACITY, LBS.</b>	25,600	21,300	11,900	11,900	36,500
<b>STROKE LENGTH, INCHES</b>	144, 125¼, 107¾	144, 125¼, 107¾	144, 121, 101	144, 121, 101	120, 102½, 86
<b>CRANKS</b>	KB-99-43 or KLB-99-43	KB-99-43 or KLB-99-43	K-76-320	K-76-36	KB-117-53 or KLB-117-53
<b>WIRELINE X CENTERS</b>	1¼" x 31' x 16"	1¼" x 31' x 16"	1¼" x 31' x 16"	1¼" x 31' x 16"	1¼" x 35' x 16"

UNIT DESIGNATION	640-305-120 456-305-120	456-256-120 320-256-120	320-213-120 228-213-120	320-173-120	228-143-120
<b>POLISHED ROD CAPACITY, LBS.</b>	30,500	25,600	21,300	17,300	14,300
<b>STROKE LENGTH, INCHES</b>	120, 102½, 86	120, 104½, 89¾	120, 104½, 89¾	120, 101, 84	120, 101, 84
<b>CRANKS</b>	KB-117-53 or KLB-117-53	KB-99-43 or KLB-99-43	KB-99-43 or KLB-99-43	K-76-320	K-76-36 or KL-76-36
<b>WIRELINE X CENTERS</b>	1¼" x 35' x 16"	1¼" x 30' x 12"	1¼" x 30' x 12"	1¼" x 30' x 12"	1¼" x 30' x 12"

UNIT DESIGNATION	160-119-120 114-119-120	320-305-100	320-256-100	228-213-100	228-173-100 160-173-100 114-173-100
<b>POLISHED ROD CAPACITY, LBS.</b>	11,900	30,500	25,600	21,300	17,300
<b>STROKE LENGTH, INCHES</b>	120, 101, 84	100, 87, 74¾	100, 87, 74¾	100, 84¾, 70	100, 84¾, 70
<b>CRANKS</b>	K-76-36 or KL-76-36	KB-99-43 or KLB-99-43	KB-99-43 or KLB-99-43	K-76-36 or KL-76-36	K-76-36 or KL-76-36
<b>WIRELINE X CENTERS</b>	1¼" x 30' x 12"	1¼" x 30' x 12"	1¼" x 30' x 12"	1" x 25' x 12"	1" x 25' x 12"

UNIT DESIGNATION	320-246-86	228-246-86	228-213-86	160-173-86	160-119-86 114-119-86
<b>POLISHED ROD CAPACITY, LBS.</b>	24,600	24,600	21,300	17,300	11,900
<b>STROKE LENGTH, INCHES</b>	86, 73, 60½	86, 73, 60½	86, 73, 60½	86, 73, 60½	86, 73, 60½
<b>CRANKS</b>	K-76-320	K-76-36 or KL-76-36	K-76-36 or KL-76-36	K-76-36 or KL-76-36	KL-76-36
<b>WIRELINE X CENTERS</b>	1" x 23' x 12"	1" x 23' x 12"	1" x 23' x 12"	1" x 23' x 12"	1" x 23' x 12"





**ADJUSTABLE CRANK BALANCED PUMPING UNIT SPECIFICATIONS — continued**

UNIT DESIGNATION	320-246-74	228-200-74 160-200-74	228-173-74 160-173-74	160-143-74 114-143-74	160-173-64 114-173-64
POLISHED ROD CAPACITY,LBS.	24,600	20,000	17,300	14,300	17,300
STROKE LENGTH, INCHES	74,63,52¼	74,63,52¼	74,63,52¼	74,63,52¼	64,54¾,45½
CRANKS	K-76-320	K-76-36 or KL-76-36	K-76-36 or KL-76-36	K-76-36 or KL-76-36	K-76-36 or KL-76-36
WIRELINE X CENTERS	1" x 23' x 12"	1" x 23' x 12"	1" x 23' x 12"	1" x 23' x 12"	1" x 23' x 12"

UNIT DESIGNATION	160-143-64 114-143-64	80-119-64 57-119-64	80-90-64 57-90-64	114-133-54 80-133-54	80-119-54 57-119-54
POLISHED ROD CAPACITY,LBS.	14,300	11,900	9,000	13,300	11,900
STROKE LENGTH, INCHES	64,54¾,45½	64,50,36¼	64,50,36¼	54,42,30½	54,42,30½
CRANKS	K-76-36 or KL-76-36	C48	C48	C-48	C48
WIRELINE X CENTERS	1" x 23' x 12"	1" x 19' x 12"	1" x 19' x 12"	7/8" x 14'-6" x 8"	7/8" x 14'-6" x 8"

UNIT DESIGNATION	80-90-54 57-90-54	57-76-54	114-133-48 80-133-48	80-109-48 57-109-48	57-95-48
POLISHED ROD CAPACITY,LBS.	9,000	7,600	13,300	10,900	9,500
STROKE LENGTH, INCHES	54,42,30½	54,42,30½	48,37½,27	48,37½,27	48,37½,27
CRANKS	C48	C-48	C48	C48	C48
WIRELINE X CENTERS	7/8" x 14'-6" x 8"	7/8" x 14'-6" x 8"	7/8" x 13'-6" x 8"	7/8" x 13'-6" x 8"	7/8" x 13'-6" x 8"

UNIT DESIGNATION	40-76-48	57-89-42 40-89-42	57-76-42 40-76-42	40-89-36	
POLISHED ROD CAPACITY,LBS.	7,600	8,900	7,600	8,900	
STROKE LENGTH, INCHES	48,34	42,30	42,30	36,25½	
CRANKS	C036	C036	C036	C036	
WIRELINE X CENTERS	7/8" x 13' 6" x 8"	7/8" x 13' 6" x 8"	7/8" x 13'-6" x 8"	7/8" x 13' 6" x 8"	



## ADJUSTABLE CRANK COUNTERBALANCE DATA

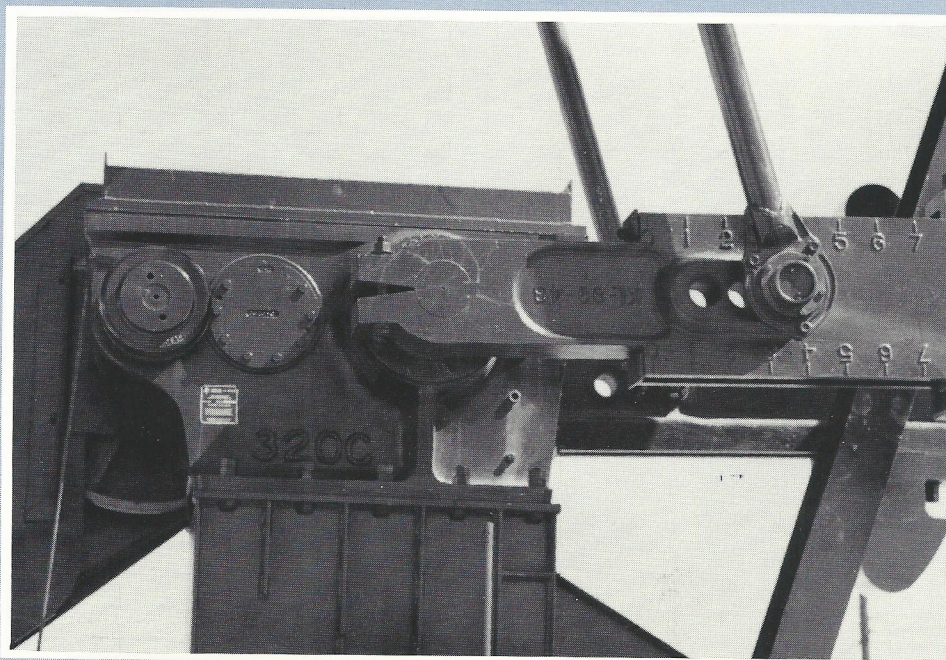
MAXIMUM EFFECTIVE COUNTERBALANCE @ THE POLISHED ROD @ MAXIMUM STROKE												
UNIT	912-365-168 640-365-168 912-305-168 640-305-168 456-305-168	912-365-168 640-365-168 912-305-168 640-305-168 456-305-168	912-365-144 640-365-144 640-305-144 640-256-144 456-305-144 456-256-144	912-365-144 640-365-144 640-305-144 640-256-144 456-305-144 456-256-144	320-256-144	320-256-144 320-213-144	640-305-120 456-365-120 456-305-120	640-305-120 456-365-120 456-305-120	456-256-120 320-256-120 320-213-120	456-256-120 320-256-120 320-213-120 228-213-120	320-305-100 320-256-100	320-305-100 320-256-100
Crank Number	KB-117-53	KLB-117-53	KB-117-53	KLB-117-53	KB-99-43	KLB-99-43	KB-117-53	KLB-117-53	KB-99-43	KLB-99-43	KB-99-43	KLB-99-43
Crank Only	5510	3550	7970	5690	5420	3130	10460	7730	7220	4480	9300	6010
4-B	7630	5670	10460	8180	7460	5170	13450	10710	9660	6930	12240	8950
2-B, 2-D	8010	6050	10900	8620	7820	5530	13980	11240	10090	7360	12760	9470
4-D	8400	6440	11350	9070	8180	5890	14520	11780	10530	7800	13280	10000
2-D, 2-F	8790	6830	11810	9530	8550	6260	15070	12330	10970	8240	13810	10520
4-F	9190	7230	12270	9990	8920	6630	15620	12880	11420	8680	14340	11060
2-F, 2-H	9550	7690	12690	10410	9250	6960	16120	13380	11820	9080	14820	11530
4-H	9910	7950	13110	10830	9580	7300	16630	13890	12220	9480	15310	12020
2-H, 2-J	10360	8400	13640	11360	10010	7720	17260	14520	12730	9990	15920	12630
4-J	10820	8860	14170	11890	10440	8150	17900	15160	13240	10500	16530	13240
2-J, 2-L	11190	9230	14600	12320	10780	8490	18420	15680	13650	10910	17020	13730
4-L	11570	9610	15040	12760	11120	8840	18950	16210	14070	11330	17520	14230
2-L, 2-N	12300	10340	15890	13610	11780	9500	19970	17230	14860	12120	18470	15190
4-N	13030	11070	16750	14460	12440	10170	20990	18250	15660	12920	19430	16150
2-N, 2-PJ	13290	11330	17060	14780	12780	10500	21360	18620	16060	13220	19910	16630
4-PJ	13560	11600	17370	15090	13120	10840	21740	19000	16460	13720	20400	17110
2-PJ, 2-RJ	14420	12460	18380	16100	13960	11670	22950	20210	17470	14730	21600	18310
4-RJ	15290	13340	19390	17110	14800	12510	24160	21430	18480	15730	22810	19520
2-XJ, 2-L	16370	14410	20640	18360	15630	13300	25670	22930	19480	16710	24020	20700
2-XJ, 2-PJ	17360	15400	21810	19530	16630	14330	27060	24320	20680	17910	24970	22130
2-RJ, 2-XJ	18230	16270	22820	20540	17470	15170	28270	25530	21690	18920	26660	23340
4-XJ	21170	19160	26250	23910	20140	17820	32390	29580	24900	22100	30520	27160
2-XJ, 2-YJ	24480	22520	30110	27830	—	—	37030	34290	—	—	—	—
4-YJ	27800	25840	33980	31700	—	—	41670	38930	—	—	—	—

UNIT	320-119-144	228-119-144 160-119-144	320-173-120	228-143-120 160-119-120 114-119-120	228-143-120 160-119-120 114-119-120	228-213-100 228-173-100 160-173-100 114-173-100	228-213-100 228-173-100 160-173-100 114-173-100	320-246-86	228-246-86 228-213-86 160-173-86	228-246-86 228-213-86 160-173-86 114-119-86	320-246-74
Crank Number	K-76-320	K-76-36	K-76-320	K-76-36	KL-76-36	K-76-36	KL-76-36	K-76-320	K-76-36	KL-76-36	K-76-320
Crank Only	1260	1140	2580	2410	620	3590	1420	5300	4480	1960	5870
4-B	2750	2620	4340	4190	2120	5740	3230	7810	6990	4070	8770
2-B, 2-D	3010	2880	4650	4500	2380	6110	3540	8250	7420	4430	9280
4-D	3270	3140	4960	4810	2640	6490	3860	8690	7860	4790	9790
2-D, 2-F	3520	3390	5260	5120	2880	6860	4150	9120	8290	5140	10290
4-F	3770	3650	5570	5420	3130	7230	4450	9550	8720	5490	10790
2-F, 2-H	4000	3900	5840	5700	3350	7560	4710	9930	9100	5790	11230
4-H	4230	4100	6120	5970	3570	7890	4980	10320	9480	6100	11680
2-H, 2-J	4520	4390	6470	6320	3850	8310	5320	10810	9970	6500	12250
4-J	4810	4690	6820	6670	4130	8740	5670	11310	10470	6900	12820
2-J, 2-L	5040	4920	7100	6950	4350	9070	5930	11700	10860	7210	13270
4-L	5280	5150	7380	7230	4570	9410	6200	12090	11250	7520	13730
2-L, 2-N	5710	5580	7900	7750	4970	10040	6680	12820	11980	8080	14580
4-N	6140	6020	8420	8270	5380	10670	7170	13560	12710	8650	15430
2-N, 2-P	6360	6240	8690	8540	5590	10990	7430	13940	13090	8950	15870
4-P	6590	6470	8960	8810	5800	11320	7690	14320	13470	9250	16310
2-P, 2-R	7130	7010	9610	9460	6330	12100	8330	15230	14380	9990	17370
4-R	7680	7550	10260	10110	6860	12890	8970	16150	15300	10740	18440
2-R, 2-S	8480	8350	11220	11070	7640	14260	9910	17510	16890	11830	20010
4-S	9280	9160	12180	12040	8420	15630	10850	18870	18480	12920	21590



## ADJUSTABLE CRANK COUNTERBALANCE DATA — continued

UNIT	228-200-74 160-200-74 228-173-74 160-173-74 160-143-74 114-143-74	228-200-74 160-200-74 228-173-74 160-173-74 160-143-74 114-143-74	160-173-64 114-173-64 160-143-64 114-143-64	160-173-64 114-173-64 160-143-64 114-143-64	80-119-64 57-119-64 80-90-64 57-90-64	114-133-54 80-133-54 80-119-54 57-119-54 80-90-54 57-90-54 57-76-54	114-133-48 80-133-48 80-109-48 57-109-48 57-95-48	40-76-48	57-89-42 40-89-42 57-76-42 40-76-42	40-89-36		
Crank Number	K-76-36	KL-76-36	K-76-36	KL-76-36	C48	C48	C48	C036	C036	C036		
Crank Only	5030	2100	6410	2860	1440	2140	2530	1550	1890	2220		
4-A	—	—	—	—	2770	3710	4300	2850	3370	3940		
2-A, 2-B	—	—	—	—	3160	4180	4830	3240	3810	4460		
4-B	7940	4550	9790	5670	3560	4650	5630	3630	4250	4890		
2-B, 2-D	8440	4970	10370	6150	3910	5070	5860	3960	4630	5430		
4-D	8950	5390	10950	6640	4270	5500	6310	4290	5010	5880		
2-D, 2-F	9450	5790	11530	7100	4590	5880	6740	4570	5330	6250		
4-F	9950	6190	12110	7570	4920	6270	7170	4850	5650	6620		
2-F, 2-H	10390	6550	12620	7980	5200	6600	7540	5070	5910	6920		
4-H	10840	6910	13140	8390	5480	6930	7920	5300	6170	7220		
2-H, 2-J	11410	7370	13800	8920	5850	7370	8410	5620	6530	7640		
4-J	11990	7830	14460	9450	6230	7810	8910	5940	6890	8060		
2-J, 2-L	12440	8190	14980	9860	6500	8130	9270	—	—	—		
4-L	12900	8550	15510	10270	6770	8460	9640	—	—	—		
2-L, 2-N	13750	9200	16490	11020	7250	9030	10280	—	—	—		
4-N	14600	9860	17480	11780	7730	9600	10920	—	—	—		
2-N, 2-P	15040	10210	17990	12180	8000	9910	11270	—	—	—		
4-P	15480	10560	18500	12580	8270	10230	11630	—	—	—		
2-P, 2-R	16540	11420	19730	13580	8970	11100	12570	—	—	—		
4-R	17610	12290	20960	14580	9680	11980	13520	—	—	—		
2-R, 2-S	—	13560	—	16040	—	—	—	—	—	—		
4-S	—	14830	—	17500	—	—	—	—	—	—		





## BEAM BALANCED PUMPING UNIT SPECIFICATIONS

UNIT DESIGNATION	40-76-42	25-67-36	25-56-36	25-53-30
POLISHED ROD CAPACITY,LBS.	7600	6700	5600	5300
STROKE LENGTH, INCHES	42,30	36,32,29	36,32,29	30,27,24
CRANKS	C033	TF-35	TF-35	TF-25
WIRELINE X CENTERS	7/8" x 13'-6" x 8"	5/8" x 10'-9" x 7 3/8"	5/8" x 10'-6" x 7 3/8"	5/8" x 9'-4" x 7 3/8"

### MAXIMUM EFFECTIVE COUNTERBALANCE @ THE POLISHED ROD @ MAXIMUM STROKE

CRANK NUMBER		C033	TF-35	TF-35	TF-25
BEAM WT. NO.		T9D-64-2	T9D-64-2	T7D-48-2	TF-610-2
<b>NUMBER OF BEAM WEIGHTS</b>	0	300	190	240	240
	1	680	700	640	670
	2	1060	1200	1040	1090
	3	1420	1690	1420	1510
	4	1780	2170	1790	1910
	5	2130	2640	2160	2300
	6	2480	3090	2520	2670
	7	2810	3540	2860	3040
	8	3140	3980	3200	3400
	9	3450	4410	3520	3740
	10	3760	4820	—	—
	11	4060	5230	—	—
12	4360	5620	—	—	

## ADJUSTABLE BEAM BALANCED PUMPING UNIT SPECIFICATIONS

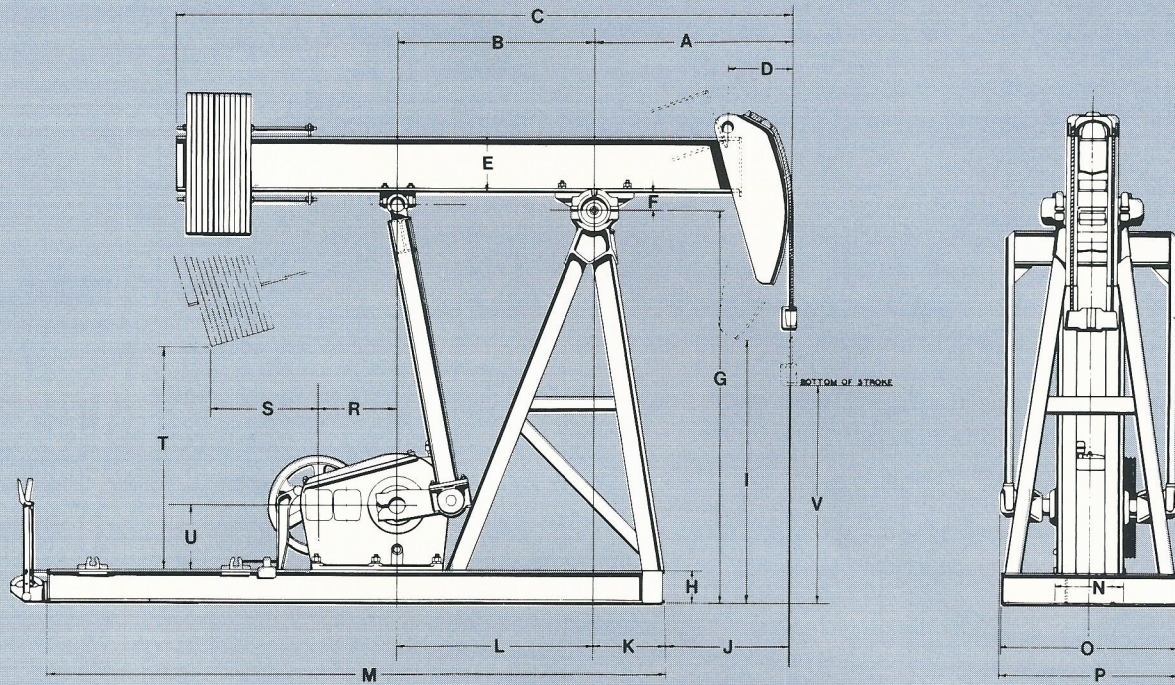
UNIT DESIGNATION	80-109-48 57-109-48	80-95-48 57-95-48	UNIT DESIGNATION	80-109-48 57-109-48	80-94-48 57-95-48
POLISHED ROD CAPACITY,LBS.	10,900	9,500	POLISHED ROD CAPACITY,LBS.	10,900	9,500
STROKE LENGTH, INCHES	48,37 1/2	48,37 1/2	STROKE LENGTH, INCHES	48,37 1/2	48,37 1/2
CRANKS	C46	C46	CRANKS	C46	C46
WIRELINE X CENTERS	7/8" x 12'-6" x 8"	7/8" x 12'-6" x 8"	WIRELINE X CENTERS	7/8" x 12'-6" x 8"	7/8" x 12'-6" x 82"

### MAXIMUM EFFECTIVE COUNTERBALANCE • THE POLISHED ROD • MAXIMUM STROKE

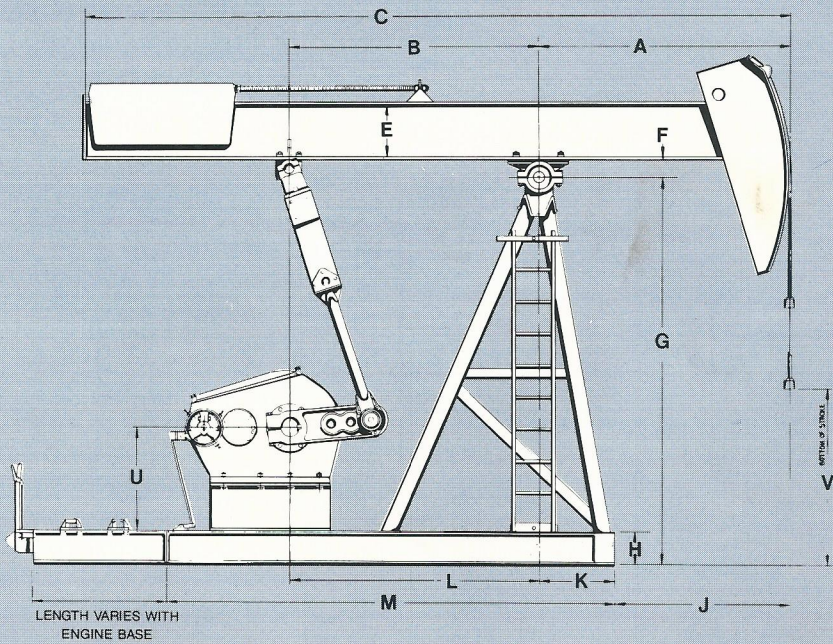
CRANK NUMBER	C46	C46	CRANK NUMBER	C46	C46
1-SC Only	3440	3440	1-SE & 1-SF12	6000	6000
1-SC & 1-SF16	3830	3830	1-SE & 3-SF16	6390	6390
1-SC & 2-SF16	4220	4220	1-SE & 4-SF16	6770	6770
1-SC & 1-SF12	4220	4220	1-SE & 2-SF12	6770	6770
1-SC & 3-SF16	4610	4610	1-SG Only	6150	6150
1-SC & 4-SF16	4990	4990	1-SG & 1-SF16	6530	6530
1-SC & 2-SF12	4990	4990	1-SG & 2-SF16	6920	6920
1-SE Only	5220	5220	1-SG & 1-SF12	6920	6920
1-SE & 1-SF16	5610	5610	1-SG & 3-SF16	7310	7310
1-SE & 2-SF16	6000	6000	1-SG & 4-SF16	7700	7700
			1-SG & 2-SF12	7700	7700



## BEAM BALANCED PUMPING UNIT — OUTLINE DIMENSIONS



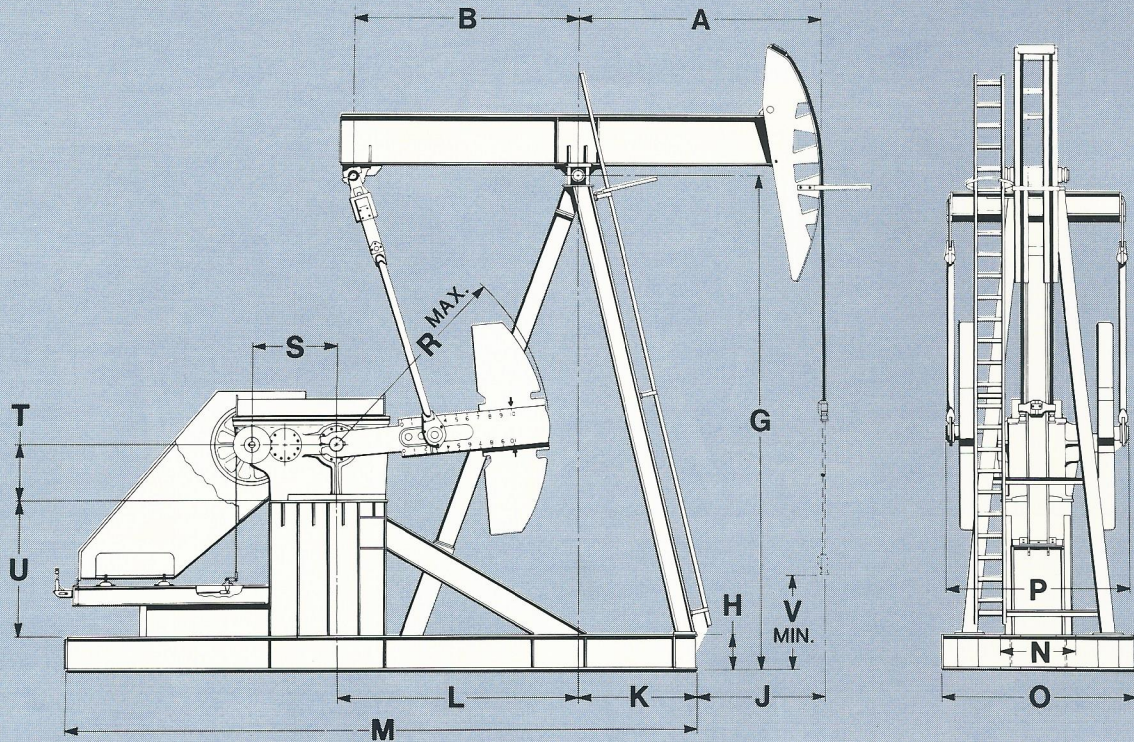
API SIZE	AMERICAN SIZE	A	B	C	G	H	J	K	L	M	N	O	P	U	V
40-76-42	T7F42-7B-D40G	63"	54"	13'3"	8'2 <sup>3</sup> / <sub>4</sub> "	9 <sup>7</sup> / <sub>8</sub> "	40"	23"	54"	11'6"	24"	36"	52 <sup>3</sup> / <sub>16</sub> "	33 <sup>3</sup> / <sub>8</sub> "	30 <sup>1</sup> / <sub>2</sub> "
25-67-36	T7F36-7B-D25A	54"	"	13'7"	8'1"	8"	36 <sup>1</sup> / <sub>2</sub> "	17 <sup>1</sup> / <sub>2</sub> "	"	12'6 <sup>1</sup> / <sub>2</sub> "	16 <sup>1</sup> / <sub>2</sub> "	39"	35 <sup>5</sup> / <sub>8</sub> "	27"	43 <sup>1</sup> / <sub>2</sub> "
25-56-36	T5F36-5B-D25A	"	"	12'4 <sup>1</sup> / <sub>8</sub> "	6'9"	"	39 <sup>3</sup> / <sub>4</sub> "	14 <sup>1</sup> / <sub>4</sub> "	"	10'11 <sup>3</sup> / <sub>8</sub> "	13 <sup>3</sup> / <sub>4</sub> "	35"	"	19"	27 <sup>1</sup> / <sub>2</sub> "
25-53-30	T5F30-5B-D25A	45"	45"	10'10 <sup>1</sup> / <sub>2</sub> "	"	"	30 <sup>3</sup> / <sub>4</sub> "	"	45"	10'3 <sup>1</sup> / <sub>2</sub> "	"	"	"	13"	31 <sup>3</sup> / <sub>8</sub> "



API SIZE	AMERICAN SIZE	A	B	C	G	H	J	K	L	M	U	V
80-109-48	T11F48-2BZ-D80G	72"	72"	17'3"	9'7 <sup>5</sup> / <sub>8</sub> "	10 <sup>1</sup> / <sub>8</sub> "	50 <sup>1</sup> / <sub>4</sub> "	21 <sup>3</sup> / <sub>4</sub> "	72"	11'11 <sup>3</sup> / <sub>4</sub> "	29"	4'6"
80-95-48	T9F48-2BZ-D80G	"	"	"	"	"	"	"	"	"	"	"
57-109-48	T11F48-2BZ-D57G	"	"	"	"	"	"	"	"	"	"	"
57-95-48	T9F48-2BZ-D57G	"	"	"	"	"	"	"	"	"	"	"



## ADJUSTABLE CRANK PUMPING UNIT OUTLINE DIMENSIONS



SIZE	A	B	G	H	J	K	L	M	N	O	P	R	S	T	U	V
912-365-168	15'4 <sup>3</sup> / <sub>4</sub> "	10'2 <sup>5</sup> / <sub>8</sub> "	22'15 <sup>5</sup> / <sub>8</sub> "	18"	10'3"	5'13 <sup>1</sup> / <sub>4</sub> "	11'0"	27'5 <sup>3</sup> / <sub>4</sub> "	37 <sup>7</sup> / <sub>8</sub> "	7'2"	8'6 <sup>1</sup> / <sub>2</sub> "	117"	45.750"	30"	5'11"	4'3"
912-305-168	"	"	"	"	"	"	"	"	"	"	"	"	"	"	"	"
912-365-144	13'2 <sup>3</sup> / <sub>8</sub> "	"	"	"	8'0 <sup>5</sup> / <sub>8</sub> "	"	"	"	"	"	"	"	"	"	"	6'2"
640-365-168	15'4 <sup>3</sup> / <sub>4</sub> "	"	"	"	10'3"	"	"	"	"	"	8'2 <sup>1</sup> / <sub>4</sub> "	"	"	"	"	4'3"
640-305-168	"	"	"	"	"	"	"	"	"	"	"	"	"	"	"	"
640-365-144	13'2 <sup>3</sup> / <sub>8</sub> "	"	"	"	8'0 <sup>5</sup> / <sub>8</sub> "	"	"	"	"	"	"	"	"	"	"	6'2"
640-305-144	"	"	"	"	"	"	"	"	"	"	"	"	"	"	"	"
640-256-144	"	"	"	"	"	"	"	"	"	"	"	"	"	"	"	"
640-305-120	11'0"	"	"	"	5'10 <sup>1</sup> / <sub>4</sub> "	"	"	"	"	"	"	"	"	"	"	6'8"
456-305-168	15'4 <sup>3</sup> / <sub>4</sub> "	"	"	"	10'3"	"	"	"	"	"	7'5 <sup>1</sup> / <sub>2</sub> "	"	39.933"	28"	6'1"	4'3"
456-305-144	13'2 <sup>3</sup> / <sub>8</sub> "	"	"	"	8'0 <sup>5</sup> / <sub>8</sub> "	"	"	"	"	"	"	"	"	"	"	6'2"
456-156-144	"	"	"	"	"	"	"	"	"	"	"	"	"	"	"	"
456-365-120	11'0"	"	"	"	5'10 <sup>1</sup> / <sub>4</sub> "	"	"	"	"	"	"	"	"	"	"	6'8"
456-305-120	"	"	"	"	"	"	"	"	"	"	"	"	"	"	"	"
456-256-120	"	8'4"	18'7"	15 <sup>7</sup> / <sub>8</sub> "	7'3 <sup>1</sup> / <sub>4</sub> "	3'8 <sup>3</sup> / <sub>4</sub> "	9'2"	22'11 <sup>1</sup> / <sub>8</sub> "	36 <sup>1</sup> / <sub>4</sub> "	6'2"	"	99"	"	"	4'9"	5'5"
320-256-144	13'2 <sup>3</sup> / <sub>8</sub> "	"	"	"	9'5 <sup>5</sup> / <sub>8</sub> "	"	"	"	"	"	7'1 <sup>1</sup> / <sub>4</sub> "	"	35.167"	24"	5'1"	4'6"
320-213-144	"	"	"	"	"	"	"	"	"	"	"	"	"	"	"	"
320-119-144	"	6'11 <sup>3</sup> / <sub>8</sub> "	"	"	9'8 <sup>5</sup> / <sub>8</sub> "	3'5 <sup>3</sup> / <sub>4</sub> "	7'6 <sup>1</sup> / <sub>8</sub> "	18'9"	"	5'9"	6'8 <sup>1</sup> / <sub>2</sub> "	76"	"	"	3'2 <sup>3</sup> / <sub>8</sub> "	5'4"
320-256-120	11'0"	8'4"	"	"	7'3 <sup>1</sup> / <sub>4</sub> "	3'8 <sup>3</sup> / <sub>4</sub> "	9'2"	22'11 <sup>1</sup> / <sub>8</sub> "	"	6'2"	7'1 <sup>1</sup> / <sub>4</sub> "	99"	"	"	5'1"	5'5"
320-213-120	"	"	"	"	"	"	"	"	"	"	"	"	"	"	"	"
320-173-120	"	6'11 <sup>3</sup> / <sub>8</sub> "	"	"	7'6 <sup>1</sup> / <sub>4</sub> "	3'5 <sup>3</sup> / <sub>4</sub> "	7'6 <sup>1</sup> / <sub>8</sub> "	18'9"	"	5'9"	6'8 <sup>1</sup> / <sub>2</sub> "	76"	"	"	3'2 <sup>3</sup> / <sub>8</sub> "	5'2"
320-305-100	9'2"	8'4"	"	"	5'5 <sup>1</sup> / <sub>4</sub> "	3'8 <sup>3</sup> / <sub>4</sub> "	9'2"	22'11 <sup>1</sup> / <sub>8</sub> "	"	6'2"	7'1 <sup>1</sup> / <sub>4</sub> "	99"	"	"	5'1"	5'4"
320-256-100	"	"	"	"	"	"	"	"	"	"	"	"	"	"	"	"

# ADJUSTABLE CRANK PUMPING UNIT OUTLINE DIMENSIONS — continued

SIZE	A	B	G	H	J	K	L	M	N	O	P	R	S	T	U	V
320-246-86	7'10 <sup>5</sup> / <sub>8</sub> "	6'11 <sup>1</sup> / <sub>8</sub> "	14'10 <sup>3</sup> / <sub>8</sub> "	15 <sup>7</sup> / <sub>8</sub> "	4'4 <sup>7</sup> / <sub>8</sub> "	3'5 <sup>3</sup> / <sub>4</sub> "	7'6 <sup>1</sup> / <sub>8</sub> "	18'9"	36 <sup>1</sup> / <sub>4</sub> "	5'9"	6'8 <sup>1</sup> / <sub>2</sub> "	76"	35.167"	24"	3'2 <sup>1</sup> / <sub>8</sub> "	5'0"
320-246-74	6'9 <sup>3</sup> / <sub>8</sub> "	"	"	"	3'3 <sup>5</sup> / <sub>8</sub> "	"	"	"	"	"	"	"	"	"	"	"
228-213-144	13'2 <sup>3</sup> / <sub>8</sub> "	8'4"	18'7"	"	9'5 <sup>5</sup> / <sub>8</sub> "	3'8 <sup>3</sup> / <sub>4</sub> "	9'2"	22'11 <sup>1</sup> / <sub>8</sub> "	"	6'2"	6'6"	99"	33.300"	"	5'1"	4'6"
228-119-144	"	6'11 <sup>1</sup> / <sub>8</sub> "	"	"	9'8 <sup>5</sup> / <sub>8</sub> "	3'5 <sup>3</sup> / <sub>4</sub> "	7'6 <sup>1</sup> / <sub>8</sub> "	18'9"	"	5'9"	6'1 <sup>1</sup> / <sub>4</sub> "	76"	"	"	3'2 <sup>1</sup> / <sub>8</sub> "	5'4"
228-213-120	11'0"	8'4"	"	"	7'3 <sup>1</sup> / <sub>4</sub> "	3'8 <sup>3</sup> / <sub>4</sub> "	9'2"	22'11 <sup>1</sup> / <sub>8</sub> "	"	6'2"	6'6"	99"	"	"	5'1"	5'5"
228-143-120	"	6'11 <sup>1</sup> / <sub>8</sub> "	"	"	7'6 <sup>1</sup> / <sub>4</sub> "	3'5 <sup>3</sup> / <sub>4</sub> "	7'6 <sup>1</sup> / <sub>8</sub> "	18'9"	33 <sup>1</sup> / <sub>2</sub> "	5'9"	6'1 <sup>1</sup> / <sub>4</sub> "	76"	"	"	3'2 <sup>1</sup> / <sub>8</sub> "	5'2"
228-213-100	9'2"	"	14'10 <sup>3</sup> / <sub>8</sub> "	"	5'8 <sup>1</sup> / <sub>4</sub> "	"	"	"	"	"	"	"	"	"	"	4'0"
228-173-100	"	"	"	"	"	"	"	"	"	"	"	"	"	"	"	"
228-246-86	7'10 <sup>5</sup> / <sub>8</sub> "	"	"	"	4'4 <sup>7</sup> / <sub>8</sub> "	"	"	"	"	"	"	"	"	"	"	5'0"
228-213-86	"	"	"	"	"	"	"	"	"	"	"	"	"	"	"	"
228-200-74	6'9 <sup>3</sup> / <sub>8</sub> "	"	"	"	3'3 <sup>5</sup> / <sub>8</sub> "	"	"	"	"	"	"	"	"	"	"	"
228-173-74	"	"	"	"	"	"	"	"	"	"	"	"	"	"	"	"
160-119-144	13'2 <sup>3</sup> / <sub>8</sub> "	"	18'7"	"	9'8 <sup>5</sup> / <sub>8</sub> "	"	"	"	"	"	5'4 <sup>1</sup> / <sub>4</sub> "	"	30.200"	20"	3'6 <sup>1</sup> / <sub>8</sub> "	5'4"
160-119-120	11'0"	"	"	"	7'6 <sup>1</sup> / <sub>4</sub> "	"	"	"	"	5'9"	"	"	"	"	"	5'2"
160-173-100	9'2"	"	14'10 <sup>3</sup> / <sub>8</sub> "	"	5'8 <sup>1</sup> / <sub>4</sub> "	"	"	"	"	"	"	"	"	"	"	4'0"
160-173-86	7'10 <sup>5</sup> / <sub>8</sub> "	"	"	"	4'4 <sup>7</sup> / <sub>8</sub> "	"	"	"	"	"	"	"	"	"	"	5'0"
160-119-86	"	"	"	"	"	"	"	"	"	"	"	66 <sup>5</sup> / <sub>8</sub> "	"	"	"	"
160-200-74	6'9 <sup>3</sup> / <sub>8</sub> "	"	"	"	3'3 <sup>5</sup> / <sub>8</sub> "	"	"	"	"	"	"	76"	"	"	"	"
160-173-74	"	"	"	"	"	"	"	"	"	"	"	"	"	"	"	"
160-143-74	"	"	"	"	"	"	"	"	"	"	"	"	"	"	"	"
160-173-64	"	7'10"	"	"	"	"	"	"	"	"	"	"	"	"	"	"
160-143-64	"	"	"	"	"	"	"	"	"	"	"	"	"	"	"	"
114-119-120	11'0"	6'11 <sup>1</sup> / <sub>8</sub> "	18'7"	"	7'6 <sup>1</sup> / <sub>4</sub> "	"	"	"	"	5'9"	"	"	"	"	"	5'2"
114-173-100	9'2"	"	14'10 <sup>3</sup> / <sub>8</sub> "	"	5'8 <sup>1</sup> / <sub>4</sub> "	"	"	"	"	"	"	"	"	"	"	4'0"
114-119-86	7'10 <sup>5</sup> / <sub>8</sub> "	"	"	"	4'4 <sup>7</sup> / <sub>8</sub> "	"	"	"	"	"	"	66 <sup>5</sup> / <sub>8</sub> "	"	"	"	5'0"
114-143-74	6'9 <sup>3</sup> / <sub>8</sub> "	"	"	"	3'3 <sup>5</sup> / <sub>8</sub> "	"	"	"	"	"	"	76"	"	"	"	"
114-173-64	"	7'10"	"	"	"	"	"	"	"	"	"	"	"	"	"	"
114-143-64	"	"	"	"	"	"	"	"	"	"	"	"	"	"	"	"
114-133-54	6'9"	6'0"	10'9 <sup>1</sup> / <sub>8</sub> "	10'1 <sup>1</sup> / <sub>8</sub> "	3'9 <sup>1</sup> / <sub>2</sub> "	2'11 <sup>1</sup> / <sub>2</sub> "	6'0"	14'9"	25 <sup>3</sup> / <sub>4</sub> "	4'1 <sup>1</sup> / <sub>2</sub> "	5'1 <sup>5</sup> / <sub>16</sub> "	52 <sup>1</sup> / <sub>4</sub> "	"	"	2'4 <sup>5</sup> / <sub>8</sub> "	4'7 <sup>1</sup> / <sub>4</sub> "
114-133-48	6'0"	"	"	"	3'0 <sup>1</sup> / <sub>2</sub> "	"	"	"	"	"	"	"	"	"	"	"
80-119-64	8'0"	"	"	"	5'0 <sup>1</sup> / <sub>2</sub> "	"	"	"	"	"	4'6 <sup>1</sup> / <sub>16</sub> "	"	25.500"	16"	"	"
80-90-64	"	"	"	"	"	"	"	"	"	"	"	"	"	"	"	"
80-133-54	6'9"	"	"	"	3'9 <sup>1</sup> / <sub>2</sub> "	"	"	"	"	"	"	"	"	"	"	"
80-119-54	"	"	"	"	"	"	"	"	"	"	"	"	"	"	"	"
80-90-54	"	"	"	"	"	"	"	"	"	"	"	"	"	"	"	"
80-133-48	6'0"	"	"	"	3'0 <sup>1</sup> / <sub>2</sub> "	"	"	"	"	"	"	"	"	"	"	"
80-109-48	"	"	"	"	"	"	"	"	"	"	"	"	"	"	"	"
57-90-64	8'0"	"	"	"	5'0 <sup>1</sup> / <sub>2</sub> "	"	"	"	"	"	"	"	"	"	"	"
57-119-54	6'9"	"	"	"	3'9 <sup>1</sup> / <sub>2</sub> "	"	"	"	"	"	"	"	"	"	"	"
57-90-54	"	"	"	"	"	"	"	"	"	"	"	"	"	"	"	"
57-76-54	"	"	"	"	"	"	"	"	"	"	"	"	"	"	"	"
57-109-48	6'0"	"	"	"	3'0 <sup>1</sup> / <sub>2</sub> "	"	"	"	"	"	"	"	"	"	"	"
57-95-48	"	"	"	"	"	"	"	"	"	"	"	"	"	"	"	"
57-89-42	5'3"	4'6"	8'2 <sup>3</sup> / <sub>4</sub> "	9 <sup>7</sup> / <sub>8</sub> "	3'4"	1'11"	4'6"	11'6"	24"	3'0"	"	41 <sup>3</sup> / <sub>8</sub> "	"	"	1'5 <sup>3</sup> / <sub>4</sub> "	2'6 <sup>1</sup> / <sub>2</sub> "
57-76-42	"	"	"	"	"	"	"	"	"	"	"	"	"	"	"	"
40-76-48	6'0"	"	"	"	4'1"	"	"	"	"	"	4'4 <sup>3</sup> / <sub>16</sub> "	"	17.250"	12"	1'9 <sup>3</sup> / <sub>4</sub> "	2'4 <sup>1</sup> / <sub>2</sub> "
40-89-42	5'3"	"	"	"	3'4"	"	"	"	"	"	"	"	"	"	"	2'6 <sup>1</sup> / <sub>2</sub> "
40-76-42	"	"	"	"	"	"	"	"	"	"	"	"	"	"	"	"
40-89-36	4'6"	"	"	"	2'7"	"	"	"	"	"	"	"	"	"	"	2'8 <sup>3</sup> / <sub>4</sub> "



# HERRINGBONE GEAR SPEED REDUCERS

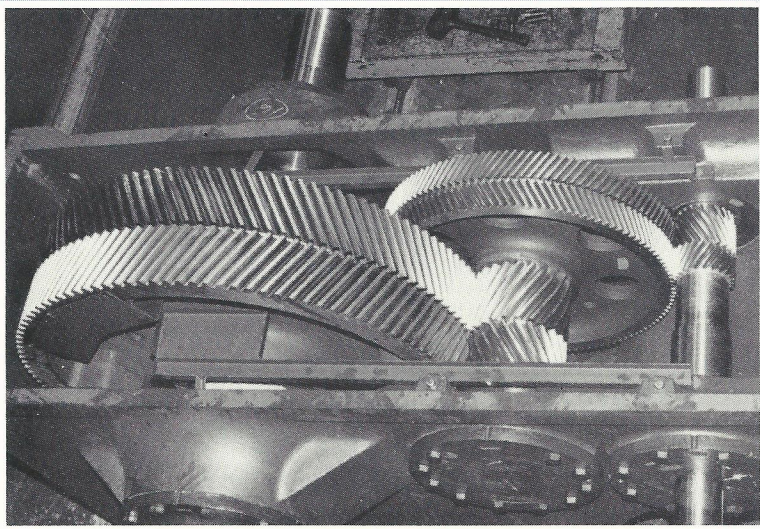
*Performance Proven!*



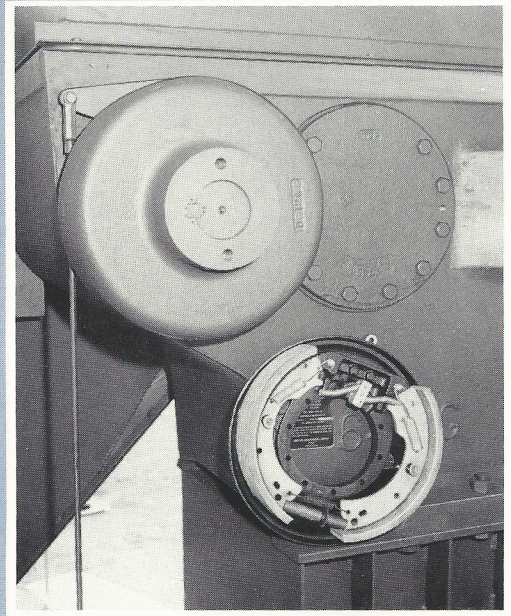
## GEAR DATA

### DOUBLE REDUCTION HERRINGBONE GEARS

REDUCER NUMBER	RATING*	RATIO OF GEARS	GEAR BOX OIL CAPACITY U.S. GALLONS	SHEAVE DIMENSIONS	CRANKSHAFT DIAMETER INCHES
D912G	912,000	29.25	100	4 1/4" Bore 44"-8C, 50"-8C, 27"-5D, 33"-5D, 40"-5D, 37.5-5V-8	7 1/4
D640G	640,000	29.25	100	4 1/4" Bore 30"-8C, 36"-6C, 44"-6C, 50"-6C, 27"-4D, 33"-4D, 40"-4D, 37.5-5V-6	7 1/4
D456G	456,000	29.78	60	3 5/8" Bore 30"-6C, 36"-6C, 44"-5C, 50"-5C, 27"-4D, 33"-4D, 37.5-5V-5	7 1/4
D320G	320,000	30.32	55	3 1/2" Bore 24"-5C, 30"-5C, 36"-4C, 44"-4C, 22"-3D, 27"-3D, 33"-3D, 37.5V-4, 28-5V-4	7 1/4
D228G	228,000	30.03	35	3 1/8" Bore 20"-4C, 24"-4C, 30"-4C, 36"-3C, 37.5-5V-4, 28-5V-4	6
D160G	160,000	29.02	25	2 5/16" Bore 20"-3C, 24"-3C, 30"-3C, 36"-3C	6
D114G	114,000	29.02	25	2 5/8" Bore 18"-3C, 20"-3C, 24"-3C, 30"-3C, 36"-3C	6
D80G	80,000	29.93	12	2 3/16" Bore 18"-2C, 20"-2C, 24"-2C, 30"-2C	5
D57G	57,000	29.93	12	1 13/16" Bore 18"-2C, 20"-2C, 24"-2C, 30"-2C	5
D40G	40,000	27.71	7	1 1/2" Bore 18.4"-3B, 20"-3B	3 1/2
D25A	25,000	29.82	5	1 1/4" Bore 18"-3B	3 3/8



Genuine herringbone double reduction gears allow clockwise and counter-clockwise rotation with equal efficiency.



American D114 and larger units use internally expanding high capacity industrial brakes.





## TUBULAR PRODUCTS



American tubular products are recognized worldwide as a symbol of reliability and excellence. American pioneered the manufacture of swage nipples and bull plugs in 1924. The superior quality of American tubular goods is the result of over 60 years attention to the special needs of American customers.

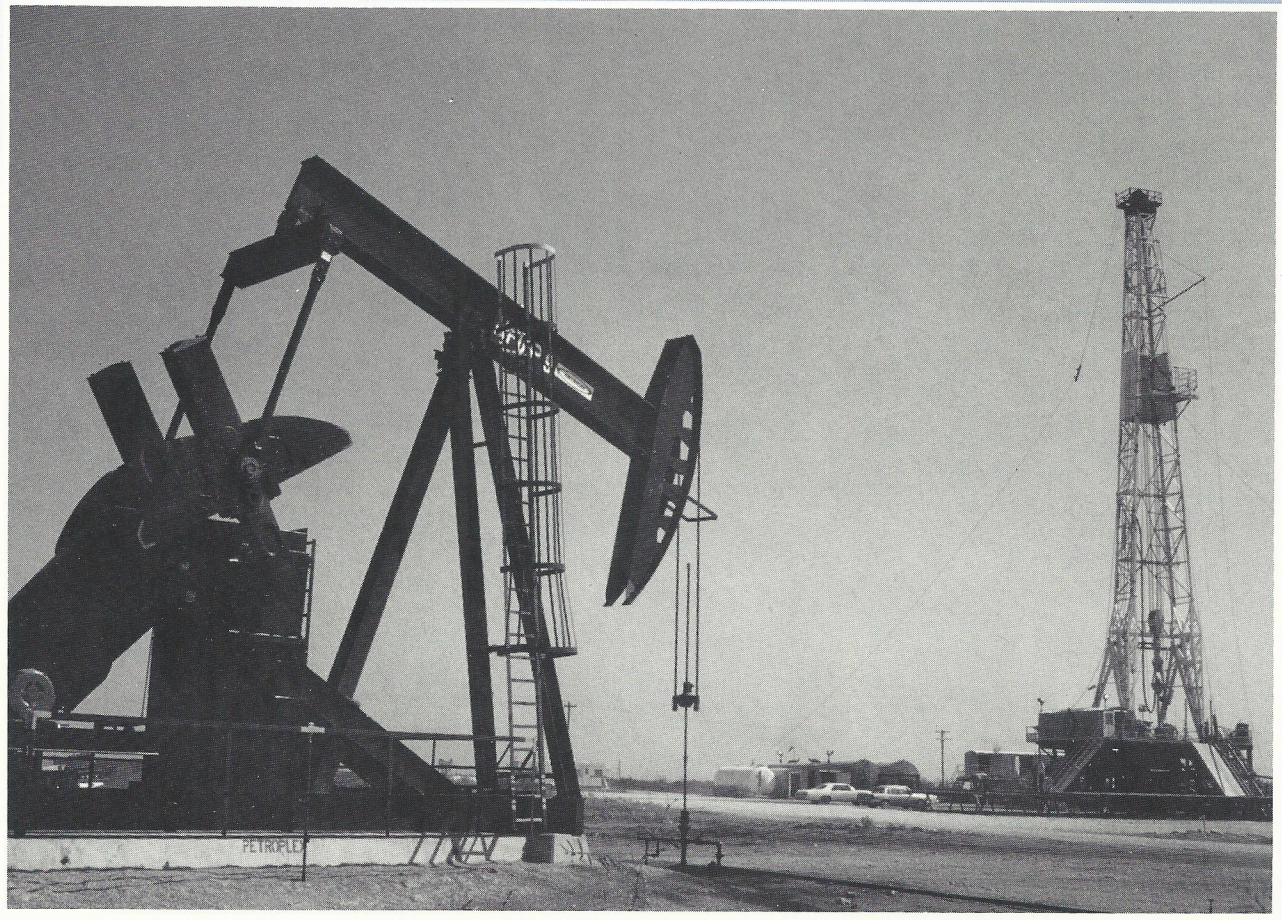
All tubular fittings are carefully inspected and strict uniformity is maintained. Each item is Brite Zinc electro-plated which eliminates rust and corrosion and prevents galling of threads at make-up. All dimensions and threads conform to A.P.I. standards or standards set up by manufacturers if no A.P.I. requirements apply. American products are attractively labeled for size, type, thread and weight. The threads on casing nipples, swage nipples and bull plugs are color coded for immediate thread identification.

American tubular goods are available through a large distributor network. For more information on tubular items call 817-838-6885.

**SWAGE NIPPLES, BULL PLUGS, CASING NIPPLES, TUBING NIPPLES,  
ADAPTER NIPPLES, PERFORATED NIPPLES AND COUPLINGS**



## AIMCO INTERNATIONAL



AIMCO International is responsible for the overseas marketing, sales and service of American energy products. A wholly owned subsidiary of American International Manufacturing Corporation, AIMCO International serves the worldwide petroleum marketplace with the technical expertise and experience necessary to respond promptly and completely to inquiries and tenders.

American pumping units and tubular products have gained wide acceptance by virtually every oil producing company in the world. In addition to serving as AIMCO's international marketing force for these products, AIMCO International also provides quotation assistance for other products, equipment and services to the international marketplace.

Whether your requirements are for pumping units, replacement parts, or complete turnkey drilling and producing packages, AIMCO International is the one source that can respond to all of your energy needs.

### **AIMCO INTERNATIONAL**

Manufacturing and General Offices:  
3100 North Sylvania Telephone: 817-838-2301  
P.O. Box 7037 Telex: 794817  
Fort Worth, Texas 76111

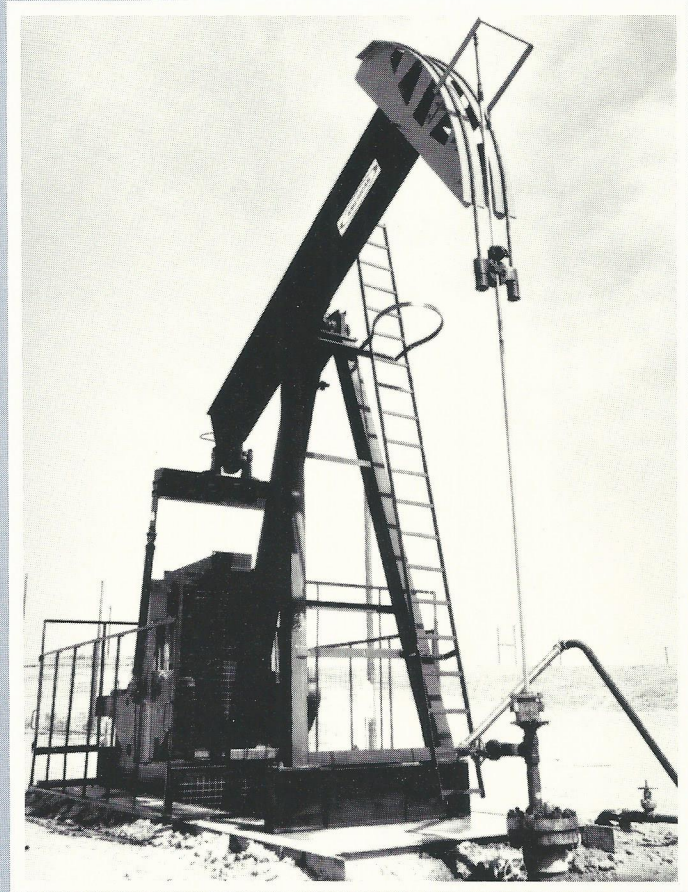
**AMERICAN**

## **PUMPING UNIT LEASING, FINANCING AND RENTAL**

The most profitable dollars an organization can spend are on development of new reserves, not in ownership of production equipment. American is the only pumping unit company in the world that addresses cash flow objectives and working capital decisions on size 57, 80, 114, 160, 228, 320, 456, 640 and 912 pumping units.

Both large and small oil companies are realizing the tremendous effect that properly tailored rental and financing programs can have on net earnings. American, through its subsidiary AIMCO Capital Corporation, can work with these companies to increase their return-on-investment and free working capital that would ordinarily be frozen in capital assets. AIMCO Capital Corporation is helping its customers every day by increasing available operating capital without disturbing their normal lines of bank credit. AIMCO Capital can also show its clients how some kinds of financing can be arranged without changing their current ratio of assets to liabilities. (Some types of financing are not reflected on the balance sheet.)

Whether your interests are domestic or international, AIMCO Capital Corporation can help get your income stream going as quickly as possible and make sure you squeeze out every penny of profit. Contact us before your next pumping unit purchase. We can offer your management staff the professional expertise it's seeking from a broad spectrum of forward-looking financing programs.



**AIMCO CAPITAL CORPORATION**  
**Leading The Way**

**P.O. Box 7037 • Fort Worth, Texas 76111 • (817) 838-2301 • Telex 794817  
1-800-438-RENT (inside Texas) • 1-800-428-RENT (outside Texas)**

**DIRECTORY**  
**Personnel, Branches & Warehouses**

**MANAGEMENT**

**B. Ted Woodle**  
 President &  
 Chairman of the Board  
**Richard A. Griffin**  
 Executive Vice President  
**R. N. Kelly**  
 Vice President  
 Manufacturing  
**Roger C. Blake**  
 Vice President  
 Engineering  
**Vincent J. Darino**  
 Vice President  
 Secretary-Treasurer  
**Thomas A. Knapik**  
 Vice President  
 Finance & Controller

**MANUFACTURING &  
 GENERAL OFFICES**

817/838-2301 Telex 794817  
 1-800-428-7368 (U.S.)  
 1-800-438-7368 (Texas)  
 3100 North Sylvania  
 P.O. Box 7037  
 Fort Worth, Texas 76111

James Van Pelt  
 Inside Sales Manager  
 Billie Lewis  
 Inside Sales  
 Cathy Clark  
 Inside Sales  
 Telephone 817/838-6885

**SALES OFFICES**

**BAKERSFIELD,  
 CALIFORNIA**

N. D. Roberts  
 Division Manager  
 Mike Bomboy  
 Division Manager  
 Telephone 805/833-6971  
 110 New Stine Rd., Suite E-1  
 Bakersfield, California 93309

**CASPER, WYOMING**

Jon Linton  
 Store Manager  
 A. D. Holt  
 Service Manager  
 Telephone 307/472-7072  
 2663 Oil Drive West Gate II  
 Casper, Wyoming 82604  
 Mailing address:  
 P.O. Box 754  
 Mills, Wyoming 82644

**DALLAS/FORT WORTH,  
 TEXAS**

Don Hawthorne  
 District Manager  
 Joe Whitaker  
 District Manager  
 Telephone 214/630-8491  
 Mobile Phone 214/957-6437  
 2730 Stemmons Freeway  
 Suite 305 West  
 Dallas, Texas 75207

**DENVER, COLORADO**

Harold T. (Bud) Branum  
 Division Manager  
 Tim Paterniti  
 District Manager  
 Telephone 303/571-5369  
 518 17th Street  
 Denver Club Bldg, Room 690  
 Denver, Colorado 80202

**FARMINGTON,  
 NEW MEXICO**

Joe Hopper  
 Telephone 505/325-4635  
 625 South Carlton  
 Farmington, New Mexico  
 87401

**GREAT BEND, KANSAS**

Tim Miller  
 Telephone 316/792-4389  
 115 Patton Road  
 Great Bend, Kansas 67530

**HOBBS, NEW MEXICO**

Rojo Specialty  
 Telephone 505/393-8017  
 123 South Grimes  
 Hobbs, New Mexico 88240

**HOUSTON, TEXAS**

Don Burch  
 Division Manager  
 Bobby Hawthorne  
 Division Manager  
 Vickie Milner  
 Inside Sales  
 Telephone 713/681-6434  
 2950 North Loop West  
 Suite 290  
 Houston, Texas 77092

**MIDLAND, TEXAS**

Jimmy C. Floyd  
 Division Manager  
 Bud Steward  
 District Manager  
 Telephone 915/682-5462  
 312 North Big Spring St.  
 Midland, Texas 79701

**ODESSA, TEXAS**

Steve Mareschal  
 District Manager  
 Lee Gilbow  
 Store Manager  
 Dub Wallis  
 Service Manager  
 Telephone 915/337-4603  
 920 West Second  
 Odessa, Texas 79763

**OKLAHOMA CITY,  
 OKLAHOMA**

Art Householder  
 Division Manager  
 Telephone 405/239-6129  
 Mid-America Tower  
 20 North Broadway, Suite 840  
 Oklahoma City, Oklahoma 73102

**MT. CARMEL, ILLINOIS**

Phil McGuire  
 District Manager  
 Telephone 618/263-3261  
 P.O. Box 129  
 Mt. Carmel, Illinois 62863

**OLNEY, ILLINOIS**

James Mourey  
 Telephone 618/395-1115  
 1125 S. Whittle  
 Olney, Illinois 62450

**SHREVEPORT,  
 LOUISIANA**

Sonny Sutton  
 Telephone 318/424-9024  
 Sutton Sales & Service  
 1185 Hawn Avenue  
 Shreveport, Louisiana 71107

**WICHITA, KANSAS**

Dave Eshelman  
 District Manager  
 Telephone 316/264-2203  
 110 North Market  
 Wichita, Kansas 67202

**WICHITA FALLS, TEXAS**

Jerry Vaughn  
 Telephone 817/322-5254  
 4100 Henry Grace Fwy. S.  
 Wichita Falls, Texas 76302

**PUMPING UNIT  
 LEASING,  
 FINANCING,  
 RENTAL**

**AIMCO Capital  
 Corporation**

Art Householder  
 Vice President  
 Cathy Clark  
 Inside Sales  
 1-800-428-7368 (U.S.)  
 1-800-438-7368 (Texas)

**OKLAHOMA CITY,  
 OKLAHOMA**

AIMCO Capital Corporation  
 Susan R. Beck  
 District Manager  
 Telephone 405/239-6129  
 Mid-America Tower  
 20 North Broadway, Suite 840  
 Oklahoma City, Oklahoma 73102

**INTERNATIONAL  
 OFFICES**

**U.S.A.**

Manufacturing & General  
 Offices  
 817/838-2301 Telex 794817  
 3100 North Sylvania  
 P.O. Box 7037  
 Fort Worth, Texas 76111

**EUROPE**

Mascall Petroleum Services  
 Limited  
 G.T. Mascall, Director  
 61, Boldmere Road  
 Sutton Coldfield, West  
 Midlands  
 B73 5XA, England  
 Telephone 021-335-5830  
 Telex 336859

**ARGENTINA**

George Fort  
 Petro Sistemas, C.A.  
 Apartado Postal (P.O.Box) 1265  
 Maracaibo, Venezuela  
 Telephone 061-527161  
 Telex 64335

**COLOMBIA**

George Fort  
 Petro Sistemas, C.A.  
 Apartado Postal (P.O.Box) 1265  
 Maracaibo, Venezuela  
 Telephone 061-527161  
 Telex 64335

**ECUADOR**

George Fort  
 Petro Sistemas, C.A.  
 Apartado Postal (P.O.Box) 1265  
 Maracaibo, Venezuela  
 Telephone 061-527161  
 Telex 64335

**INDONESIA**

P.T. Gemilang  
 Jalan Palatehan 1/32-33  
 Blok K 5, Kebayoran Baru  
 Jakarta, Indonesia  
 Telephone 021/355-5830  
 Telex 47415

**PERU (LIMA)**

Oilfield Import, S.A.  
 Apartado 5235  
 Lima, Peru  
 Telephone 406829  
 Telex 2116 P.E.

**PERU (TALARA)**

Oilfield Import, S.A.  
 Casilla IA  
 Talara, Peru  
 Telephone 74765  
 Telex 41518

**TRINIDAD**

George Fort  
 Petro Sistemas, C.A.  
 Apartado Postal (P.O.Box) 1265  
 Maracaibo, Venezuela 4001A  
 Telephone 061-527161  
 Telex 64335

**VENEZUELA**

George Fort  
 Petro Sistemas, C.A.  
 Apartado Postal (P.O.Box) 1265  
 Maracaibo, Venezuela 4001A  
 Telephone 061-527161  
 Telex 64335 PETEC-VE  
 Apartado 145  
 El Tigrito-Anzoategui-Venezuela  
 Telephone 083-31852